

Living History

A Quarterly Journal of Historical Preservation

Volume 3, Number 3

THE MILL AT LEDYARD, CONNECTICUT

In response to my request for information on up-and-down sawmills, a friend in Albany county, New York, sent a drawing of a blade he had documented on a mill at Kent, Connecticut, and a letter telling of another vertical mill he had discovered in Ledyard, Connecticut. He had visited the Ledyard site in July but it was not in operation because the water in the millpond was low. He planned to go back in April or May of this year when the mill would be working and open to the public.

In early May I called the number he had given me and was told by Ruth Dyer, one of the volunteers at the site, that the mill had just suffered a major breakdown. The men who operate and maintain it were working on the problem but were not sure when it would be operational. I told her I would come anyway. After all, maintenance and repair are important aspects of a water mill.

Ledyard, Connecticut, is a hilly township a few miles from the states southern coast. It lies in the watershed of the Mystic River, east of New London. In the nineteenth century there were many small water-driven mills in Ledyard. As part of the town's bicentennial celebration in 1975, the last of these mills, an up-and-down sawmill, was restored to working condition on Lee's brook. Other mill sites in Ledyard are prized by their steamside homeowners who preserve their foundations and artifacts.

When I arrived at Ledyard on a bright April afternoon, the pond was full of water and the mill was sawing a one-inch-board from a 16-foot hemlock log. Half a dozen visi-

Sawyers and Millwrights of Saugerties, New York



Charlie and Michael Rothe Training Their Team, Michael keeps six Belgian horses for logging. They are ideal for selective harvesting and do less damage to the forest than modern diesel equipment.
(Photo by P. Sinclair)

Although little remains in the written record, some believed there was a sawmill in the mid-Hudson Valley at the present town of Saugerties, New York, before the area was formally settled in the 1680s. According to Charles Rothe, a contemporary sawyer in Saugerties and at one time the town historian, the only evidence of this early mill is the name given to a small stream or kill mentioned in a 1667 treaty with the Esopus Indians. Sawyer Kill, says Charlie, inspired the legend of the "little sawyer" from which the township took its name.

By the early 1970s most of the water mills of Saugerties were gone and forgotten. Eventually, Charlie recalls, some citizens of the town got interested in local heritage and decided to rebuild a water-powered grist mill on Sawyer Kill so people wouldn't forget what the town was all about. The mill was to be built above the place where legend puts the little sawyers mill, on the relative well preserved foundation of Terwilliger's Grist Mill.

The committee of the Little Sawyer's Association hired local carpenters to reconstruct the 14-foot wooden waterwheel and timber frame structure. Charlie, a committee member, and his wife, Lillie, donated the clapboard siding and pine shingles, which they cut on their newly restored shingle mill.

(Continued page 10)

(Continued page 8)

COMMUNICATIONS

Dear Peter,

It was nice meeting you again last Saturday. Hope everything worked well moving the pigs to their new house. Enclosed is my student subscription to Living History. I am enclosing some photos of an up-and-down sawmill I saw in Norway.

Sincerely,
Carla

Dear Carla,

Thanks for helping us move the pigs. We tied a rope around Diana and she jumped two feet, three inches. We gave that idea up fast and built a four-sided box as you suggested. If the government grants us a patent we will, with your approval, name the device in your honor.

I would be interested in more information about the sawmill for the summer issue.

Sincerely,
Peter

Dear Peter,

I'm glad you liked the *oppgangssag* (up-and-down saw). It was built in 1826 and is located 1/4 mile off the road down a wooded path near Rouland in the Telemark region of Norway. It is owned by an older man who uses it for personal projects, in the spring time

when the rivers are high. Riksantikvaren, the national governmental organization that oversees the restoration of all 'listed' buildings in Norway, uses this and other saw mills to cut lumber for restoration work. I helped to repair a nearby loft, which predates 1350, with lumber cut on this mill. After the boards were machine cut, we used a hand-hewing technique to simulate the pre-1350 method.

I believe the saw mill has two undershot wheels, the first to raise and lower the saw blade, the second to return to carriage after the cut. I am sure that all materials are original except maybe the roof. I saw another sawmill similar to this, which was moved to the folk museum in Oslo.

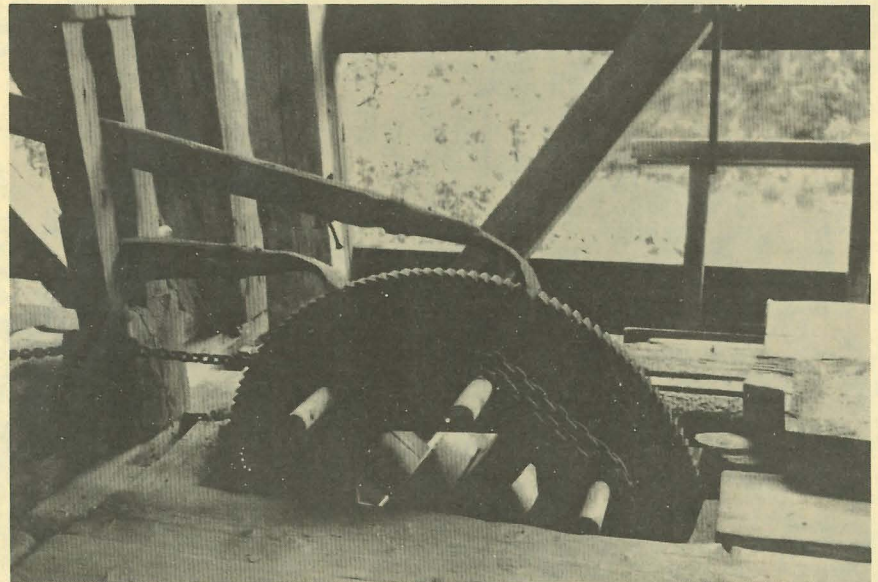
If you decide to market "Carla's Portable Pig Mover" I will require royalties. I'm glad it worked for you.

Sincerely,
Carla



1.) Sawmill, Telemark, Norway. Looking down on the undershot wheel. The pitman arm on the right is connected to the crank of the wheel shaft and operates the saw frame.

(Note: Carla Cielo is from Glen Ridge, New Jersey. She is a graduate student in Historic Preservation at Columbia University.)



2.) Sawmill, Telemark, Norway. The rag wheel pushes the log at an adjustable rate into the blade. This model uses a chain drive.

MUST SELL

3 Fanning Mills,
32 Assorted Gears,
&

One Millstone Crane
from Maryland Water Grist
Mill Collection

call

Nancy McGuire
1-(410)-758-2912

E. A. I. A. ANNUAL MEETING ALBANY, NEW YORK



3.) Sawmill, Telemark, Norway. From under the sawmill we see the small water wheel which returns the log-carriage, and behind that the flutter wheel which drives the blade.

More than 150 members of The Early America Industries Association attended the group's annual meeting at Albany from May 12 to 15. On the first day some members visited The Farmers Museum at Cooperstown where they toured the extensive tool storage facilities with curators and staff.

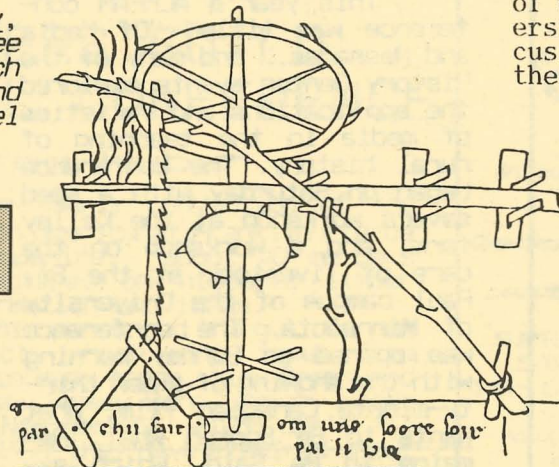
In the afternoon, members visited Hanford Mills Museum in East Meredith, New York. One of the most active and best interpreted water-mill sites in the state, this "rural industrial complex" was closed down in 1967, and restored in the 19-80s. A 12-foot over-shot water wheel, made entirely of steel by the Fitz Waterwheel Company

in 1926, powers a saw mill, a woodworking shop, and a feed mill. Evidence in the timber frame of the sawmill indicates that the present round saw, which dates back to 1870, replaced an earlier up-and-down mechanism.

Hanford's staff of six, interpret the material, social, and economic development of its site to the public with a short introductory film and demonstrations of its restored machinery. Hanford is an independent site which actively studies and documents local milling. Hanford Mills publishes a quarterly newsletter and will be the future custodian of the library and papers of the late miller Charles Howell (1926-1993).

Later in the week there were visits to the Shaker Museum at Old Chatham and Eastfield Village in Rensselaer County as well as demonstrations, tool displays, and talks at Albany. Kathy Boardman and David Parke of the Farmer's Museum in Cooperstown showed slides and discussed the life and legacy of the late William Sprague, a pioneer in the preservation of early American tools and technology and a founder of EAIA in 1933. His collection of antique tools remains an important part of the collection at Cooperstown.

Among the tool displays at Albany was a working scale model of an up-and-down sawmill based on a drawing from the year 1270 by the French artist Villard de Honnecourt. It is thought to be the earliest documentation of a water-powered sawmill. Unfortunately Villard was an artist rather than a sawyer, and his drawing raises several questions. The scale model, which was present (continued page 6)



Sketch of a Sawmill (about 1270), from Villard de Honnecourt's Album. This may be the earliest depiction of a water powered sawmill.

LIVING HISTORY

Editor/Publisher
Peter Sinclair
(914) 338-0257

Copy Editor
Denise Martin

Contributors
Brother Johannes
Christiansbrunn Kloster
Pitman, Pennsylvania
Greg Huber
Mahwah, New Jersey
Robert Anderson
Westerlo, New York
Tom Kelleher
Sturbridge, Massachusetts
Peter F. Haarmann
Westbury, New York
Don McTernan
Rheinebeck, New York
James Henry Romer
Unity, New Hampshire
...and others

TIPPLE LOGGING & LUMBER INC.

Rt. 66 Ghent, NY 12075
(518) 828-5684
(800) 271-5684

- | | |
|---------------|------------------|
| •Rough Lumber | •Finished Lumber |
| •Timbers | •Surfacing |
| •Bark Mulch | •Timber Sizing |
| •Wood Chips | •Firewood |

WE BUY STANDING TIMBER

*Producers of Quality Northern
Hardwoods & Softwoods for
over 25 Years*



Richard Frisbie
Hudson River Valley
Catskill Mountain
Regional Bookshop
Open Thurs, Fri, & Sat 1-6PM
or anytime by appointment
call
1-(914) 679-6809
free catalogue, 150 titles
6.5 Miles East of Exit 20
NYS Thruway
1708 Rt. 212,
Saugerties, NY 12477

Jonathan Medbor

**ORNAMENTAL IRONWORK
BLACKSMITH** available for
commission work

Hardware, Fireplace Accessories,
Cooking Utensils, Pot Racks,
Candleholders, Furniture, Stone &
Wood Carving Tools, Prototypes

Instruction for
individuals or groups

Handforged Traditional and
Contemporary Designs

Holiday orders now being accepted

*Blacksmith work
in all its branches,
punctually attended*

RD1 BOX 234, HIGH FALLS, NY, 12440
TELEPHONE: 914-687-7130

ACE BASE COMPANY
(914) 338-0257

for custom mounting and
display of objects
repair of damaged bases
and reconstruction of
awkward mountings

23rd Annual ALHFAM Conference St. Paul, Minnesota

About two hundred members of the Association for Living Historical Farms and Agricultural Museums (ALHFAM) came from many places throughout America and Canada to St. Paul, Minnesota, for the group's annual conference June 19th to 23rd. There were workshops and lectures at the newly completed Minnesota History Center in St. Paul, as well as bus tours made to local historic sites, such as the nineteenth century living history farm of Oliver H. Kelley, founder of the Grange, Fort Snelling, and the Lower Sioux Reservation.

This year's ALHFAM conference was titled "Of Media and Messages," and many of the History Center events explored the applications and varieties of media in the teaching of rural history. The conference began on Saturday with a seed savers workshop at the Kelley farm, and a workshop on the care of livestock at the St. Paul campus of the University of Minnesota. The conference was opened on Sunday morning with the showing of a new thirty-minute Canadian film, What Wants to Be Spoken What, Remains to Be Said, which explores the contradictions that

exit within historical documentation and presentation. The film was introduced by its script writer, Helen Humphreys, and followed by four concurrent sessions, including one entitled The Symbiotic Relationship of Living History and Historical Film by the noted author of the living history movement, Dr. Jay Anderson of Utah State University, who contrasted the historian's discipline in research with the emotional effects of media on its audience.

Regional ALHFAM groups met at lunch to plan future meetings. The afternoon featured ten concurrent sessions ranging in subject from USDA Guidelines and the Historical Farm to techniques for designing a visitor's survey. Andrew Baker, the new director of Lake Farm Park in Kirkland, Ohio, a 235-acre site founded in 1990, spoke on the need for new directions in agricultural and environmental education. The decline of the farm population to less than 2 percent of the American population today has been accompanied by a growing public illiteracy about the basics of food production. Children are more knowledgeable about wild animals of the zoo or the extinct animals that inhabit contemporary media than with the basic farm animals on which their lives depend. A recent Gallup pole found that 49 percent of Americans could not identify the main ingredient of bread.

Fred Stoker & Sons, Inc.

P. O. Box 707
Dresden, Tennessee 38225-0707
"Famous Since 1940"

MOIST SNUFF

CIGARS

PIPE CLEANERS

PIPE SMOKING TOBACCO

PIPE FILTERS

HOME-MADE LEAF TOBACCO

CHEWING TOBACCOS

TWISTS

MISCELLANEOUS ACCESSORIES

CIGARETTE SMOKING TOBACCO

CIGARETTE ROLLING PAPERS & FILTERS

CIGARETTE ROLLING MACHINES

DRY SNUFF

POUCHES

ROLL YOUR OWN CIGARETTES

DISCOVER

VISA

MasterCard

**WE SPECIALIZE IN ALL TYPES
OF TOBACCO PRODUCTS!**

Write For Samples And Catalog
Include \$1.00 For Shipping And Handling

MAIL TO:

FRED STOKER & SONS, INC.
P.O. BOX 707 - LH
DRESDEN, TN 38225-0707

Where the traditional role of the living history farm has been to recreate the architecture, handcrafts, and lifeways of the past, the farm park concept is a new paradigm that presents a more contemporary picture showing the farm as a place of choices and showing how things work. Lake Farm Park plans to maintain 200 breeds of farm animals and establish a working family farm of the 1950s.

Lance Belville, co-director of Great American History Theater based in St. Paul, founded in 1978, spoke about his group's work writing and presenting a form of musical theater that deals with rural issues. While the historic site tends to present a static happy picture of its past, the theater is able to express controversy and the collision of values in the music and humor of the lumberjack or the hard life of a rodeo cowgirl.

Dale Jones of the Baltimore City Life Museum showed a video of a theater he is producing, 45-minute dramatic pieces written for and about specific historic sites and performed by a mix of professional, amateur, and student actors.. Jones described the possibilities of this dramatic form as well as the methods he has been using to organize and produce these cooperative ventures.

Next years ALHFAM conference will held at Russel Sage College in Troy, New York. Clarissa Dillon and her Past Masters have promised to do an historic hands-on cheese making workshop. For information, write...

ALHFAM
Kathryn Boardman
Box 465
Cooperstown, NY 13326

TIMBER FRAMERS GUILD NINTH ANNUAL CONFERENCE

by Greg Huber

On July 25, during the yearly convention of the Timber Framers Guild of North America at Franklin Pierce College in Rindge, New Hampshire, about 40 members gathered to hear five lectures on historic timber framing and to share information and ideas.

Rudy Christian from Ohio announced the guild's new historical archives project, which with input from members, will survey barns in many areas. Alex Greenwood and Rick Endersby of the New Jersey Barn Company spoke on idiosyncratic barns of New Jersey, which don't fit standard categories. Since 1977 they have examined about 1,000 early New Jersey timber frame barns, among them English barns, a few Pennsylvania German barns, 100 Dutch examples, and many of mixed or eccentric design.

Paul Russell of Sussex, England, gave an introduction to the traditional processes and techniques of English house and barn construction, and then discussed The Library Barn at Hampshire Cottage. Peter Sinclair from New York spoke of the New World Dutch Barns of Ulster County. He showed slides of the early lap-dovetail joints found in about a dozen early barns and emphasized the need to document and preserve, not only the frames of large early manor-barns, but also the details and uses of the more common, smaller and later Dutch barns.

The author spoke about the design decisions made by early Dutch timber framers in conjunction with regional farming practices. He described two Dutch basement barns in New Jersey, that have a unique bent system, a seven-bay rampbarn in Rensselaer County, and a side-entrance barn in Dutchess County, New York, with eleven bents. Rudy Christian described the Pennsylvania-style forebay barns of Ohio and the three methods used in attaching the forebay sill to the extended threshingfloor joists.

(continued on page 7)

Venture to the 11th Annual

FAIR at NEW BOSTON

*An authentic recreation of a
1790-1810 trade fair*

at
**George Rogers Clark
Park**

corner Rts. 4 & 369, west of

**SPRINGFIELD, OHIO
SEPTEMBER 4 & 5
10-6, rain or shine**

Adults \$5, children 6-11 \$2
age 5 and under free

FREE PARKING

Info.

GRCHA
P.O. Box 1251
Springfield,
OH 45501

GRAN WOODWORKING

custom milled mouldings
and
fine cabinetry

(914) 246-6950
3207 Church Rd.

Saugerties

specializing in kas reproductions

E.A.I.A. ANNUAL MEETING
(continued from page 3)

ed by Richard Kappular, Executive Director of EAIA, incorporated certain changes and technical improvements on Villard's mill. The model did not survive long after an EAIA member gave it a speed test.

Emphasizing that the model was speculative, Kappular made available six architectural drawings of his model, asking members to comment. Here goes: Villard's drawing seems to show a technology that predates the use of a crank on the waterwheel shaft, and the use of a frame for the sawblade both of which appear on a drawing by Leonardo da Vinci from about 1500. Da Vinci's drawing also shows the use of a fly-wheel, which was typical for up-and-down sawmills. On Villard's drawing there appears to be a wheel to advance the log into the blade; perhaps this was an attempt to represent a rag-wheel, but it could not operate as shown.

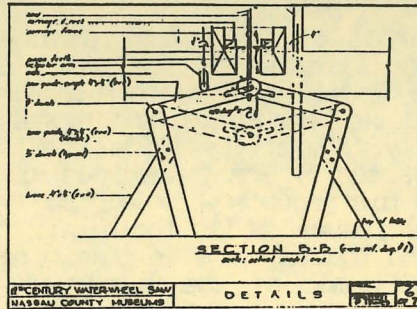
Because the machinery shown in the Villard drawing predates the use of a crank it achieves the reciprocating motion by using a bent sapling to pull the blade up and a cam-action on the waterwheel to pull the blade down. The bottom end of the blade is attached to a saw guide made of four pieces of wood. I believe your mill model misinterprets this part. I prefer one I saw in *Alte Bauernsaen* by Herbert Juttemann, ISBN 3-7650-9020-4, published in 1984. This German book from the Howell collection deserves translation. It has great drawings and offers the most exhaustive study of up-and-down sawmill technology I have run across.

Peter Sinclair

The next annual meeting of EAIA will be held in Williamsburg, Virginia (see COMING EVENTS page 11).

FOR SALE

Up & Down Sawmill
Recently removed
from original site
About 80% complete
\$2,500.00
evenings(6-9)only
914-246-1958



Detail Drawing, "12th Century Water-Wheel Saw", 1993, by P. Haws, Nassau County Museums. This scale drawing shows a blade guide as suggested by Villard Honnecourt's drawing, and is one of seven drawings used in construction of the EAIA model.

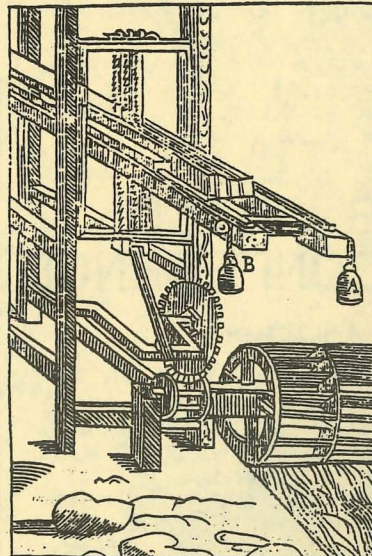
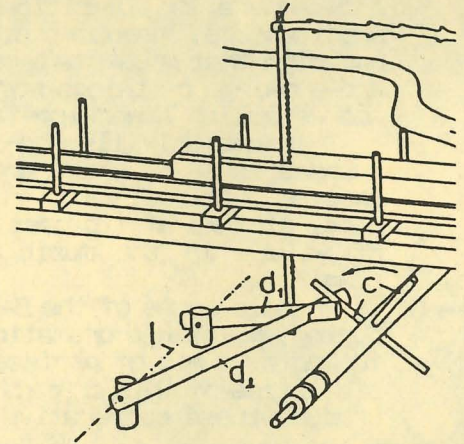


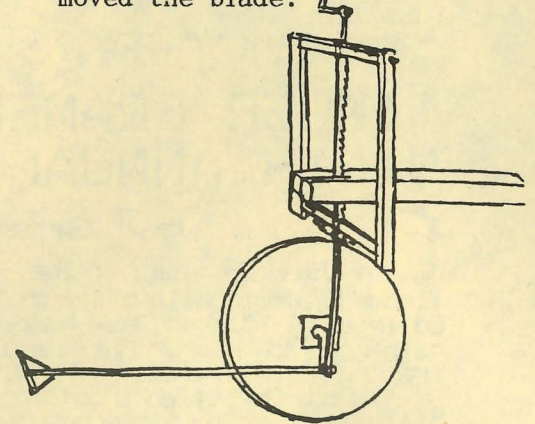
Illustration of a Sawmill (about 1650), in a book by Edward Williams. He suggested this design, based on those "common in Norway and the mountains of Sweden," for building sawmills in the colonies of the New World. Power from the water wheel is transferred through wooden gears to speed the action of the blades; it is a gang-saw with three blades. The log carriage is moved forward into the blade by the use of rope and weights.

Williams knew of the rag wheel which was "common" in Norway at that time, but he felt that in Virginia it would be difficult to keep it in repair and so he suggested the use of weights.

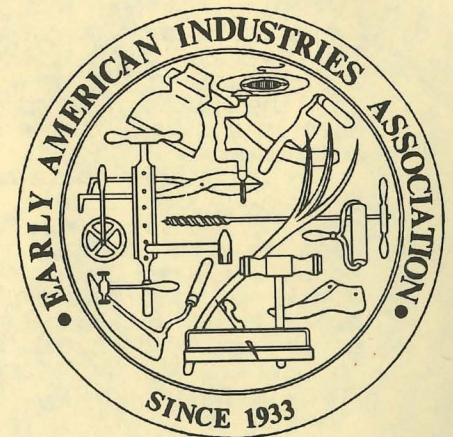
"...the ingenious Artist", Williams wrote, may easily convert the same to an Instrument of thrashing wheat, breaking hempe or flax, and other as profitable uses".



Detail of Drawing, water wheel shaft and blade guide, 1984, from book by Herbert Juttemann. This interpretation of Villard Honnecourt's drawing shows how the arms of the shaft may have moved the blade.



Sketch of a Sawmill (about 1500), by Leonardo da Vinci. This hand operated sawmill makes use of a saw frame, crank, and flywheel.



PUBLICATIONS

TIMBER FRAMERS GUILD NINTH ANNUAL CONFERENCE (continued from page 5)

The day ended with out door demonstrations of early timber framing techniques: splitting and shaving tree nails with a drawknife and shave bench; riving 5 and 6-inch oak boards with a froe and mallet, hewing a white pine timber with a chalk line, scoringaxe and broadaxe; cutting and joining timbers with a drill, saw, and slick. There were also demonstrations of Japanese timber framing and the French scribe-rule.

If you are interested in traditional timber framing contact...

Randy Nash
N.Y. State Barn Co.
1740 Burlingame Rd.
Cazanovia, NY 13035

Greg Huber from Mahwah, New Jersey, has been documenting barns since 1974.

Eaton Hill Textile Works

FABRICS
for 18th, 19th & 20th c.
INTERIORS

A selection of fine quality
handwoven natural dyed fabrics
for period interiors.

Linsey Woolsey, DIMITIES, Checked
and Plain Linens, Worsted Wools,
Checked and Striped Cottons,
Woolen Blanketing, and Venetian
Striped Carpeting.

Custom orders and reproductions
of antique and heirloom textiles
available by special request.

For a set of 40 fabric swatches, send
\$10, refundable with first order, to:

*Eaton Hill
Textile Works*
RD 1 Box 970
Plainfield, Vermont 05667
802.426.3733

THE SPINNING WHEEL SLEUTH, published three times a year, is a new and unique ten-page newsletter, "a medium of open discussion" about spinning wheels. Each issue focuses on one type of wheel. It includes updates, book reviews, terminology, care, and feeding as well as advertising for selling, seeking, shops, and services: \$5 per listing, \$10 one year subscription/3 issues, and \$3.50 sample copy, write...Florence Feldman-Wood, P.O. Box 422, Andover, MA 01810

OLD MILL NEWS, published four times a year, is a 28 page newsletter and journal of the Society for the Preservation of Old Mills (SPOOM). It includes articles, site descriptions, letters, free want ads, paid advertising, and coming events. It is in its twenty-first year of publication.

SPOOM is a 2,400 member international organization of mill owners and people with interest in mills. Its 1993 annual meeting, with seminars and mill tours, is being held September 10-11-12 at Springfield, Missouri. The 1994 meeting will be held near Albany, New York.

A \$12.50 membership to SPOOM brings you a subscription to *OLD MILL NEWS*, a 40 page *ROSTER* of present members, and a catalogue of books and publications available from *THE BOOKSTORE*. This last service includes inexpensive lists of documented mills, which are organized according to types and locations. SPOOM lists 3,700 standing mills in the US, as well as mills in Canada, England, Ireland, and Belgium. The information is kept in a data base and is continually updated. write...Fred Beals, 1531 Folkstone Court, Mishawaka, Indiana 46544.

THE JOURNAL OF THE SOCIETY FOR INDUSTRIAL ARCHEOLOGY, is published twice a year, it is an 80 page journal of scholarly, well written articles and reviews that combine the insights of field work and historical research. It deals with conservation, adaptive re-use, and museology and is illustrated with many good maps, photographs, and drawings.

Volume 17, Number 2, 1991 contains an article by Robert R. Gradie and David A. Poirier about small-scale hydropower development in Connecticut which points out the importance of archeology and historic research in understanding not only the history of water power but in planning for its future uses. In 1980 and 1981 the Public Archaeology Survey Team, Inc. (PAST), a non-profit research group, with grants from the National Parks Service and the Connecticut State Historic Preservation Office, researched and surveyed mill sites in a 137 square mile tract of the Shetucket River water shed. They discovered that the 1880 census which had attempted to assess the state's water power uses, documented only the larger and more easily accessible mills and failed to appreciate the complexity and size of Connecticut's system of using, sharing, and storing water which had developed over the previous 250 years.

In 1979 the governors of New England initiated a study of the hydroelectric potential of their states. The survey found nearly 11,000 existing dams, 1,511 in Connecticut, but the study concluded that water power could generate only 10% of New England's electric power and would be too costly to implement.

Using the 1981 findings of PAST, the authors point out that the 1979 study, like the 1880 census, failed to appreciate 19th century uses of the river, and that many of the dams they documented and found unusable, were never mill sites, but retention ponds in a complex system of water use. To emphasize the importance of historic knowledge, the authors use the example of the Congdon hydroelectric project which has been proposed for the Oxoboxo River in Connecticut. It is being planned to produce 60 Kilowatts of electricity, although the site was operating a 335 horse power turbine plus a 250 kilowatt electric generator in 1919.

Single copies of the journal are available for \$10, society membership is \$30, write... Society for Industrial Archeology, Room 5014, NMAH, Smithsonian Inst., Washington, DC 20560.

Sawyers and Millwrights of Saugerties, New York

(continued from page 1)

The committee hired carpenter Jim Kricker, from nearby Bearsville to build the wheel. With a group of local carpenters, Jim had just completed a small nineteenth century sailing sloop for Pete Seeger, *The Woody Guthrie*. The mill building and the wheel were completed. The project was two-thirds finished when all work stopped and interest in the mill seemed to fade. Today its vandalized remains are out of sight and out of mind of most local people.

It is sad that the mill never served a function for the community during its short life, but even under the best of circumstances wooden mill wheels and shafts survive only ten to fifteen years before they must be replaced or rebuilt. Since working on the Saugerties mill, Jim has twice replaced the wooden shaft of the Phillipsburg Manor Mill at Tarrytown, New York, an early gristmill and the largest water mill restoration in the Hudson Valley.

Charles Rothe, a lifelong resident of Saugerties, said that when he was a boy he recalls buying lumber from local sawmills with his father. Today he credits those visits with awakening his lifelong interest in sawmills. Charlie estimates that there are still 30 sawmills in Ulster County but fewer than five operate full time. One is the Rothe family mill he began as "a hobby" in 1972; it is now owned by his son, Michael.

Charlie smiles when he remembers seeing the last Catskill Mountain water-powered sawmill in about 1959. The mill in New Kingston, Delaware County, was then owned by the Smith family, who maintained it mostly as a conversation piece. It hadn't run commercially for 20 to 30 years. The Smith mill had a circular blade and was powered by a primitive tub wheel, an early form of water turbine. When Mr. Smith showed it off to guests, the blade would often jam in the log and the whole building would shake. Smith would back off the log and try again.



Robert Grassi and the cast-iron hub of a 24-foot diameter high breast water-wheel. This iron hub was cast in about 1830 to power a trip-hammer and iron-forge at Rochester, New York. Its spokes and paddles will be restored with oak. This type of waterwheel had a longer life than one with a wooden shaft, but when rolled steels became more available the all-metal wheels like the Fitz waterwheel surpassed the cast-iron models in durability. (Photo by P. Sinclair)

Charlie's father came to Saugerties from Germany in 1924, and Charlie has been back many times to visit his father's hometown in Silesia near Poland and to tour the nearby countries. He has found that up-and-down sawmills, powered by gasoline and diesel engines, with cast iron saw frames and often fitted with two to eight blades, are still commonly used in Germany. He found only one water-powered sawmill, in Bavaria; it had recently stopped working.

Jim Kricker's restoration of the Saugerties watermill in the early 1970s came to the attention of Charles Howell,* who was then the millwright and Master Miller of Phillipsburg Manor at Tarrytown. Howell, who died this spring at 67, represented the fifth generation of a family of British millers; he had worked as a miller since the age of 14. He became a mentor to many with an interest in mills.

Howell supervised and consulted on the restoration and reconstruction of numerous mills in the United States and England. In 1974, Robert Grassi, a young carpenter from New Jersey, who was fascinated by old mills, met Howell through the Society for the Preservation of Old Mills (SPOOM). He worked for Howell two years at the Phillipsburg mill, learning to dress (sharpen) mill stones, and maintain and repair mill machinery. Robert has since joined Kricker at Roundout Woodworking in Saugerties.

Roundout Woodworking is presently restoring an up-and-down sawmill in Connecticut on Sprain Brook, a stream that flows into the Aspetuck. In the nineteenth century three miles of this river had 21 water privileges. These mill sites were occupied by trip hammers to forge iron, slitting mills to make nails, small mills to churn butter, and a grist mill with an "eel rack," which could

catch a barrelful of eels in one day during the eel run. The sawmill on Sprain Brook was the last to survive.

At the Rondout Woodworking shop, Robert has rebuilt the rag wheel of the Sprain mill. It is a five-foot-diameter geared wheel and shaft which drives the log carriage through the blade. He is presently working on the twelve-foot oak shaft of the flutter-wheel into which the arms of the long paddles will be morticed.

These relatively small and fast moving undershot water-wheels used a simple crank and pitman-arm to drive the saw frame. Often the flutterwheel was a direct drive to the saw blade and did not use gears. When the cut in the log was complete, the water flow was stopped to the flutterwheel and a second smaller water-wheel was engaged in pulling the carriage back to reset the log. It was a Wooden Age design commonly used before cast-iron water-turbines and gears became available. Because of weathering and stress factors, few of these wooden flutter-wheel saw mills have survived. Recent documentation of the Stanley sawmill in Ohio, and three early sawmills in New Hampshire done by the Historic American Building Survey (HABS) in the 1960's as well as the archives and library of Charles Howell have been extremely helpful in guiding Robert and Jim in the restoration of the Sprain Brook sawmill.

(* The Mill at Philipsburg Manor Upper Mills and a Brief History of Milling, by Charles Howell & Allen Keller, Sleepy Hollow Restorations, 1977. Tom Kelleher, Supervisor of the mills at Old Sturbridge Village in Massachusetts, recommends this book as the best introduction to the subject.

Charles Howell was a member of a number of groups which are important in the study and preservation of mills. These included...

Society for the Preservation of Old Mills (SPOOM)
1531 Folkstone Ct.
Mishawaka, IN 46544

Early American Industries Association (EAIA)
P.O. Box 2128,
Empire Plaza Station
Albany, NY 12220-012

Society for Industrial Archaeology (SIA)
Room 5014, NMAH, Smithsonian Institution
Washington, DC 20560

Association for Preservation Technology
P.O. Box 8178
Fredericksburg, VA 22404



Charlie and Michael Rothe training a team of Belgian horses for a pulling contest.

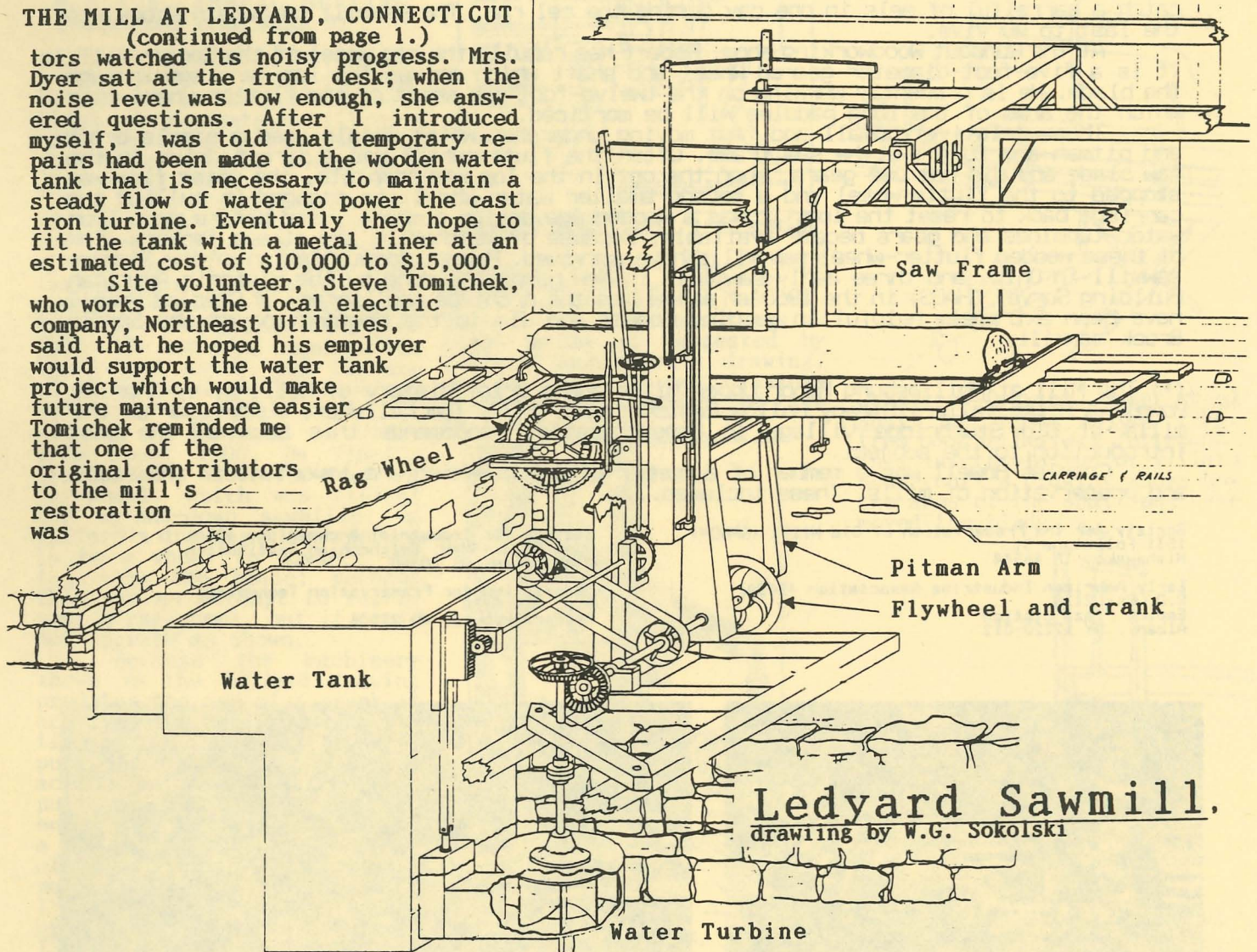
The horses are eager participants in pulling events. On a quiet command, "go", they dig their back hooves into the ground and lean their weight against the 4,500-pound load. Instantly, the horses, sled, and men move forward in a cloud of dust and noise. At about 35 feet the team is halted and rested for ten minutes.

Contests feature a measured pull of 27 feet six inches. The sled weight is increased from 3,000 pounds to 10,000 pounds. Teams are eliminated when they can not move the load. (Photo by P.Sinclair)

THE MILL AT LEDYARD, CONNECTICUT
(continued from page 1.)

tors watched its noisy progress. Mrs. Dyer sat at the front desk; when the noise level was low enough, she answered questions. After I introduced myself, I was told that temporary repairs had been made to the wooden water tank that is necessary to maintain a steady flow of water to power the cast iron turbine. Eventually they hope to fit the tank with a metal liner at an estimated cost of \$10,000 to \$15,000.

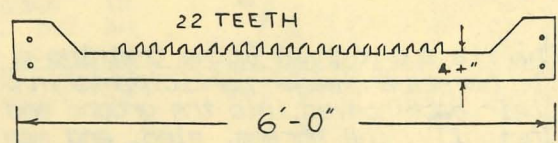
Site volunteer, Steve Tomichuk, who works for the local electric company, Northeast Utilities, said that he hoped his employer would support the water tank project which would make future maintenance easier. Tomichuk reminded me that one of the original contributors to the mill's restoration was



The Electric Boat Company in nearby Groton, which makes military submarines. In the early 1970s the company reconstructed the rag wheel that drives the log carriage through the blade. The rag wheel is a complex and precise part merging wood and metal. Its restoration was vital in getting the mill back into operation in 1975.

The Ledyard mill functioned until 1938, when a hurricane destroyed the ice house and blacksmith shop, and damaged the sawmill. At that time the mill's water turbine not only drove the pitman arm that worked the vertical saw blade but also supplied belt power for two specialized saws with circular blades. One for cutting shingles and the other railroad ties. Today the 1878 shingle mill is once again throwing off showers of long white shavings. The railroad-tie mill which once cut 1,500 ties a year, is ready to go again. Nearby stands a working blacksmith with a smoky forge and a new shop built on the old foundation.

The earliest sawmill at this Ledyard site was built in the late 1700s. It may well have been powered by an undershot water wheel placed directly in the stream. As technology and business changed, so did the mill. A pond was built in 1805 to increase the water supply, and eventually a cast iron water turbine was installed. This early 19th century turbine, probably manufactured in Massachusetts, powers the mill today. In 1966, the town of Ledyard acquired the eleven-acre park, including the sawmill and the pond for \$12,000. Today the park is maintained by the town and is used year-round for picnicking, hiking, and children's activities.



Saw Blade Measurements, Sloane-Stanley Museum, Kent Connecticut, drawing by Robert Anderson, Westerlo, NY.

In the nineteenth century, the mill was owned by a series of families, and by the time of the 1938 storm, Horace Main, was using the mill mostly to entertain his friends, it was in bad repair and no longer not operated commercially. Today the mill is kept up by a few paid staff and an enthusiastic group of local volunteers. No admission is charged but donations are accepted. Lumber and shingles are for sale.

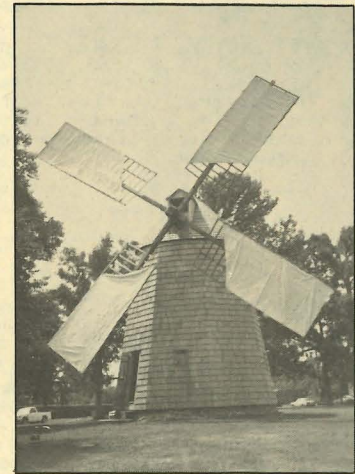
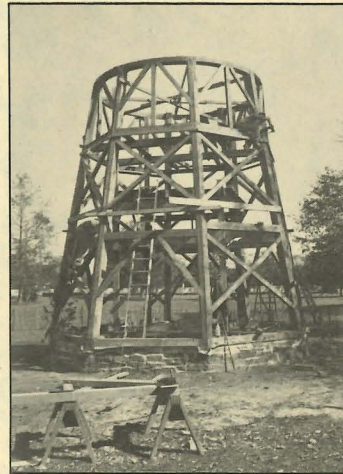
John Kelley, who oversees the demonstration and repair of the mill, estimates that there are now six to ten working vertical sawmills in the northeast. He is proud that Ledyard was one of the earliest restorations and has been able to give advice in the restoration of other saw mills like the one at Old Sturbridge Village. Ledyard has twice hosted the annual meeting of SPOOM (the Society for the Preservation of Old Mills).

The Ledyard up-and-down sawmill is in operation on Saturday afternoons, 1:00-4:00 PM, April through May and mid-October through November. For information and directions write or call...

Ruth B. Dyer
21 Hemlock Circle
Gales Ferry, CT 06335;
1-(203) 464-2874, or...

Ledyard Town Hall
Ledyard, CT 06339
1-(203) 464-8740

BARN & TIMBER FRAME Construction & Restoration



J. Corwith Windmill, Watermill, NY; restoration completed 1985

James Kricker

Rondout Woodworking, Inc

7270-1 Route 212 Saugerties, NY 12477 Phone 914 246-5845

Herb Lytle & Son
Custom Milled Lumber
Hard and Soft Woods
Specializing in custom width & length
Tapered rafters

West Hurley, Ulster County, New York
1-(914) 331-5803

The Hudson Valley

The Quintessential Guide to Hudson Valley Antiquing

Interesting stories of regional history and gardening, an appraiser's corner, display ads, classifieds, and a map.

Subscriptions, four issues, \$5

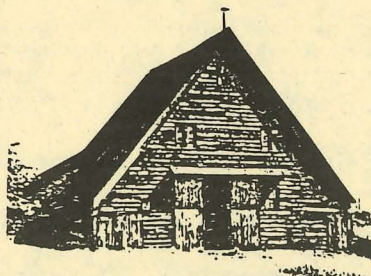
Checks payable to:

Cattails Publishing

P.O. Box 75

Staatsburg, NY 12580

FORTHCOMING

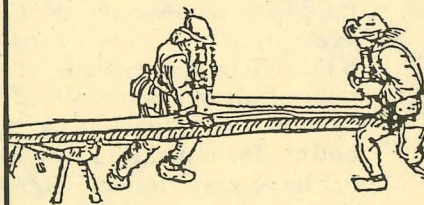


"Dutch Barns of New York"
by Vincent J. Schaefer

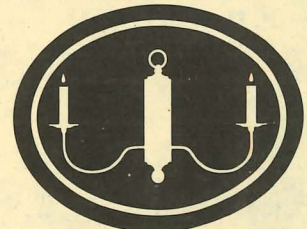
Purple Mountain Press, Ltd.
Box E-3, Fleischmanns, NY 12430
914-254-4062
FREE CATALOG

research, restoration, & design

AchterCol



G.B. Turrell, proprietor
Box 351
Piermont, NY 10968
1-(914) 359-9487
1-(201) 784-1563
WOODWORKING AND CARPENTRY



AUTHENTIC DESIGNS

The Mill Road
West Rupert, Vermont 05776-0011
Tel (802) 394-7713

October 2-3,
 Clayville, Illinois
 Clayville Fall Festival Rendezvous. Camping, traders, demonstrators, and black powder shoots.
 Jerry Mack
 304 South Douglas
 Springfield, IL 62704

October 2-3,
 Jackson County, Missouri
 Missouri Town 1855. 17th annual Fall Festival of Arts, crafts and Music. Thirty acres, thirty-five buildings (1820-1860), authentic field and garden crops, rare livestock beds, living history farm.
 Jackson County Parks and Recreation
 22807 Woods Chapel Rd.
 Blue Springs,
 MO 64015-9799

October 9-10,
 Lancaster, Pennsylvania
 Lancaster's 34th Annual Harvest Days at Landis Valley Museum. Over 70 harvest time, living history and craft demonstrations related to Pennsylvania German rural life such as baking, furniture & lace making, gardening, etc. Good food and free parking. Adults \$6 over 60, \$7 under 60, \$5 ages 6 to 17. Contact:
 Elizabeth Johnson
 Landis Valley Museum
 2451 Kissel Hill Rd.
 Lancaster, PA 17601
 1-(717) 560-2147

October 9-10,
 Schoharie, New York
 Experience Schoharie County's roll in the revolution with crafts, live music, battle reenactments, children's activities and food. Write...
 Schoharie County
 Historical Society
 North Main Street
 Schoharie, NY 12157

October 21-23,
 Mystic, Connecticut
 The 2nd Mashantucket Pequot Historical Conference. Current knowledge of the native people of New England and the impact of Federal Indian recognition, historical and anthropologists from many places.
 Mashantucket Pequot
 Indian Nation
 P.O. Box 3060
 Indiantown Road
 Ledyard, CT 06339-3060

October 22-24,
 Rochester, New York
 The New York Folklore Society will hold its annual Fall Conference in the Conference Center at The State University (SUNY) Brockport. It is being planned in conjunction with the Empire State Foxfire Teachers Network.
 Contact:
 New York Folklore Society
 P.O. Box 130
 Newfield, NY 14867

October 23-24,
 Jamestown, Virginia
 Annual meeting of S.W.E.A.T. (Society of Workers in Early Arts and Trades) will be held at Jamestown Festival Park. There are lots of interesting local sites, including Williamsburg. For information write:
 Fred Bair, Jr.
 606 Lake Lena Blvd.
 Auburndale, FL 33823

December 2-4,
 Lancaster, Pennsylvania
 Days of the Belsnickel at Landis Valley Museum. Luncheon-Tour by reservation, \$14.50; Candlelight Dinner by reservation, \$16.60 (Dec. 3 only). Write:
 Landis Valley Museum 2451
 Kissel Hill Rd.
 Lancaster, PA 17601

CLASSIFIED ADS

For the special price of \$4 for 25 words, you can place a classified ad in *Living History*. Send it to: P.O. Box 202, West Hurley, NY 12491.

RURAL NETWORK: SINGLE PEOPLE favoring country life offer social support to each other. Send \$1 for sample newsletter. Rural Networks, 6235 Borden Road-LH, Boscobel, WI 53805

OLD NEWS: Biographical history. Informative, accurate, entertaining. \$15 for one year, eleven issues. Old News, Stackstown Road, Marietta, PA 17547. Phone (717) 426-2212.

"WIDOW KENDAL" HOUSE BED & BREAKFAST
 10 North Ferry Street, Schenectady, NY 12305. In Schenectady's historic Stokade. Restored Tavern, circa 1790, furnished with antiques. Four-course breakfast overlooking the flower and herb gardens. "A special location-like a touch of Williamsburg". 1-(518) 370-5511 or 1-(800) 244-0925.

PARTY: Children's Parties, etc. Magic, Juggling, flaming devil sticks, yo-yoing. Professional props and live animal tricks. Reasonable, affordable prices. Responsible, affordable prices. Responsible, experienced high school student available to entertain and help at your child's party. Call for information...references available. 1-(914) 338-0293. Ask for Josh.

SMALL FARM TODAY: A how-to magazine of alternative crops, livestock, and direct marketing. Published every other month. Sample copy \$3 (\$4 outside U.S.). One year/6 issues \$18 (\$28 outside U.S.). 3903 W. Ridge Trail Rd., Clark, MO 65243. Call 1-(800) 633-2535. MasterCard & Visa accepted.

WRN ASSOCIATES: offers paperhanging expertise. We specialize in consulting services for the historic house museum; research, spec writing and installation. Call or write for free information and a sample copy of our newsletter, *Wallpaper Reproduction News*, Box 187, Lee, MA 01238. Telephone 1-(413) 243-3489.

LOG BUILDER: Specializing in museum reproductions - All work done by hand - Broadaxe Hewing - Available for demonstrations.
 Lenny Rizzo, 1-(504) 643-7395

MUSEUM SCIENCE STUDENT: from Texas Tech, seeking internship for summer or fall of 1994.
 Paul Camfield; Rt. 2, Box 191; Canyon, Texas 79015. 1-(806) 488-2311

DUTCH BARN RESEARCH JOURNAL: Eighteen articles, 112 pages, drawings and photographs. New and Old World Dutch material culture. \$11. incl. postage

FOR SALE: Rare animal breeds-Gloucester Old Spot pigs, Jacob and Border Leicester Sheep, Write, Bro. Johannes, Christiansbrunn Brotherhood, RD 1, Box 149, Pitman, PA 17964. Associate membership \$15 includes four issues of *The Harmonist*, "the only handset and handprinted periodical in the country."

Write for our Display Advertising Rates, or call 914-338-0257.

I'd like to subscribe to "Living History." Enclosed is \$15 for one year.

I'd like to subscribe to "Living History." Enclosed is \$12 for one year student subscription.

I'd like to advertise in "Living History." Send me details. Discounts for multiple insertions.

I have experiences, memories and other input. Contact me at _____

Name _____

Address _____

Send to "Living History," P.O. Box 202, West Hurley, N.Y. 12491



VLY CREEK

A Unique Nursery
in a Garden Setting
Offering an extensive selection
of unusual garden plants

Sat. & Sun. 10-5, also by appt.
255 Krumville Rd. (County Rt.
2A), Olivebridge, NY
914-657-7064

MICHAEL WEISBROT
ARCHIVAL PHOTOGRAPHY
AND WEDDINGS.
(914) 338-0293.



Smoke and Fire Trading Post

Located at Seven Eagles
Historic Education Center
16482 Wapakoneta Rd.,
Grand Rapids, OH 43522

LANTERNS • EARLY AM.
POTTERY • HISTORIC
CLOTHING • BOOKS AND PATTERNS
MUTZLELOADERS • LEATHER • BEADS
HISTORIC VIDEO RENTAL

Store Hours: 10 a.m.-5 p.m. Thurs.-Sat., 1 p.m.-5 p.m. Sun.
Free Catalog • Specializing in Colonial Period History • Dave Weir
and Donlyn Meyers - Proprietors

PUBLISHERS OF SMOKE AND FIRE NEWS
(914) 832-0303 or to place an Order
1-800 SMOKE/FIRE

THE SPINNING WHEEL SLEUTH

A Newsletter about Rare and
Unusual Spinning Wheels.

\$10 three issues
Sample \$3.50

The Spinning Wheel Sleuth
P.O. Box 422
Andover, MA 01810

COMING EVENTS

July 17,
Honolulu, Hawaii

Archaeological Excavation: find
out what trash can tell you. Simulated
"dig" on museum grounds. Admission \$5
for adults; \$4 for *kamaaina*, senior
citizens, and military; \$1 for youths
(6-15) and students; Free to children
(under 6)

The Mission House Museum
553 South King Street
Honolulu, Hawaii 96813

July 23-25,
Oswego, New York

In conjunction with Harborfest
'93, Fort Ontario State Historic Site
will host a spectacular military page-
ant with interpretive groups repre-
senting all periods from the French
and Indian Wars to the present. Plans
are underway for a unique land/sea
event involving the participation of a
number of square-rigged vessels. Write
or call:

Richard B. LaCrosse
Fort Ontario SHS
Oswego, NY 13126
1-(315) 343-4711

September 8-11,
Columbus, Ohio

Annual meeting of the American
Association for State and Local
History (AASLH). For information
write:

AASLH
172 Second Avenue North
Nashville, TN 37201

September 11-12,
Sibley, Missouri

Fort Osage Music and Trade
Faire, is looking for musicians and
tradespeople to participate. The time
frame is pre-1812 and period attire is
required. Contact:

Grady Manus
Fort Osage
105 Osage Street
Sibley, Missouri 64088
1-(816) 249-5737

September 25,
Schoharie, New York

250th Anniversary of the 1743
Palatine House. Colonial demonstra-
tions. 18th century German family
afternoon vespers service to commemo-
rate the building of this first Lu-
theran parsonage. For information
write:

Diane Szabo
Schoharie Colonial Heri-
tage Association
Box 554
Schoharie, NY 12157

September 29-October 3,
Hancock, Massachusetts

Traditional Timber Framing with
Jack Sobon and Dave Carlton at Hancock
Shaker Village. Contact:

Jack Sobon
P.O. Box 201
Windsor, MA 01270
1-(413) 684-3223



- | | | | |
|------------------|------------------------------------------------------------------|----------------|--------------------------------------------------------------------------------------|
| August | | October | |
| 8 Sun. | Temperance and Charitable Society Fair, 1-4 pm | 2 Sat. | Annual Fall Juried Craft & Art Show & Sale, 10am - 4pm
\$2 Adults. Under 12, Free |
| 21 Sat. | Collectibles Show & Sale
8am - 4pm, \$3 per car. | 9 Sat. | Fall Antiques Show & Sale 8am - 4pm
\$2 Adults. Under 12, Free |
| September | | 16 Sat. | Flea Market 8am - 4pm
\$1 Adults. Under 12, Free |
| 4 Sat. | Guild Demonstration Day:
Fiber Arts, 12-4 pm | 17 Sun. | Hearth Cooking in the Manager's House, 12-4pm |
| 5 Sun. | Laundry Day, 12-4 pm | 30 Sat. | Evening Lantern Tours of the Village, \$2 per person, 7-9pm |
| 6 Mon. | Parlor Games & Outdoor Amusements,
12-4 pm | 31 Sun. | All Hallow's Eve, 1-4pm |
| 11 Sat. | Making Merry Music, Singing and
Dancing in the 1830s, 12-4 pm | | |
| 18 Sat. | Flea Market, 8am - 4pm
\$1 Adults. Under 12, Free | | |



Historic Allaire Village

A COMMUNITY LISTED ON THE NEW JERSEY AND THE NATIONAL REGISTERS OF HISTORIC PLACES

In Allaire State Park
Allaire, New Jersey 07727,
(908) 938-2253 Fax (908) 938-3302

Present This Coupon At Our General Store And Receive

10 % OFF ANY PURCHASE

Offer Good Through December 31, 1993

To:

West Hurley, New York 12491
P.O. Box 202

Living History

From:

BULK RATE
U.S. POSTAGE
PAID
Permit No. 60
West Hurley, NY 12491



Training a Team of Belgium for a Pulling Contest, There is teamwork between men and horses. The horses are eager to pull, but the driver knows how much to ask of them. Between short pulls, he rests the team for about ten-minutes before they pull again. Michael Rothe, their owner, also uses these horses to pull logs for his sawmill and to do field work.

The NEXT ISSUE of Living History will travel to the Mohawk Valley of New York State to visit with Willis Barshied in Palatine Bridge and see his barn museum. Living History welcomes information on historic interpretation in the Mohawk Valley.